



Paralan's iS500 Family of Products:

High-Quality iSCSI Bridge™ Technology at an Affordable Price



Making SCSI Work™

Paralan's iS500 Family of iSCSI Bridges™: Increased Productivity, Maximum Flexibility

For over 17 years, Paralan Corporation has developed cutting-edge products to address the needs of the rapidly changing data storage market. Recognizing the need to merge parallel SCSI storage into IP (iSCSI) Storage Area Networks (SAN), Paralan developed the iS500 Family of iSCSI to parallel SCSI Bridges. One of the fastest and most cost-effective iSCSI Bridge™ solutions available, the iS500 Family can be used to locate parallel SCSI storage at any distance via any Ethernet port using iSCSI protocol.

If you have an IP SAN, Paralan's iS500 Family of iSCSI Bridges™ will easily connect your parallel SCSI devices to IP storage networks and convert "Direct Attached Storage" (DAS) systems and devices to networked iSCSI storage environments.

If you do not have a SAN, Paralan's iS500 Family of iSCSI Bridges™ will easily and inexpensively locate storage and backup SCSI devices anywhere for disaster recovery or remote backup – yards, meters, kilometers, or miles – the distance is unlimited!

As a leader in SCSI innovation, Paralan provides these Bridges in various form factors to meet a variety of configuration needs:

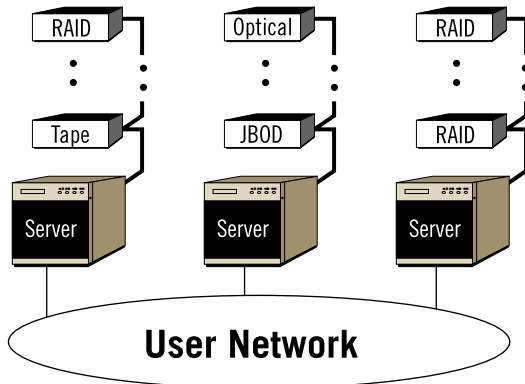
- **Board version:** Perfect for OEMs and System Integrators to incorporate into their own packages.
- **Stand-Alone Box version:** Simply connect cables and apply power.
- **Rack Mountable version:** Conveniently mounts Paralan's iSCSI Bridges™ into storage racks.

iS500 Family Product Highlights include:

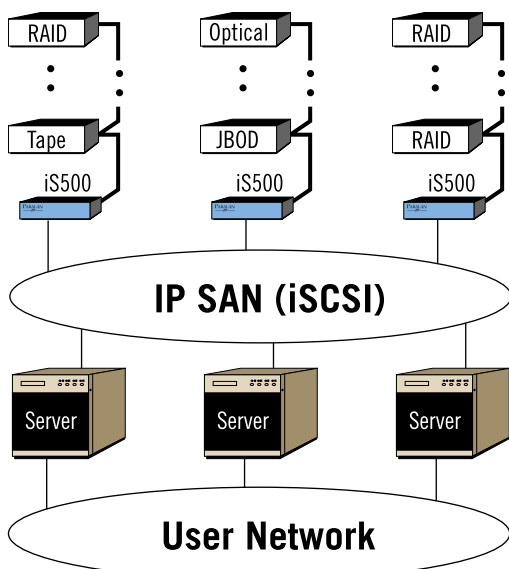
- Fast and Reliable Wire Speed iSCSI Throughput
- Board, Box or Rack Mount
- Built-in User-Friendly Graphical Interface
- Easy Installation and Set Up
- Field Upgradeable Firmware

Merge SCSI Storage Into IP (iSCSI) SANs

Before: Direct Attached Storage (DAS), each Server can directly access only its own storage.

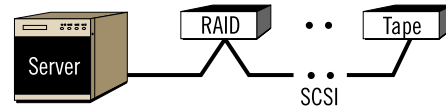


After: Storage Area Network (SAN), all Servers can access all storage.

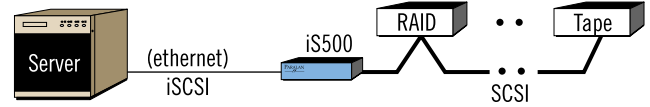


Remote SCSI Storage with iSCSI Bridges™

Before: SCSI cable lengths too short to place storage remotely



After: Place SCSI storage anywhere through iSCSI



Paralan's iS500 Family: Offering the Competitive Edge

Paralan's iS500 Family was developed with one goal in mind: ultimate performance. As a result, each Paralan iS500 Bridge boasts the following exceptional features:

- ✓ Built-in Graphical Interface addressable by any web browser through the Gigabit Ethernet port.
- ✓ Easy installation including an initial IP address and the capability to be used in DHCP over TCP/IP environments.
- ✓ Automatically detects every parallel SCSI device connected to the 68-pin SCSI interface upon power up.
- ✓ Field upgradeable to adapt to future expansions of the iSCSI specifications, and compliant with iSCSI and SCSI interface standards.
- ✓ At-a-Glance status LEDs for SCSI Bus Activity, Self Diagnostics, Power, Gigabit Ethernet Link Status and Gigabit Ethernet Activity.
- ✓ Utilizes a dedicated 833 MHz 32-bit processor for maximum iSCSI and SCSI throughput.
- ✓ Embedded Adaptec Ultra160 SCSI controller chip providing state of the art, reliable control of all SCSI devices. The iS500 Series offers models that support LVD/MSE and HVD SCSI.

In addition, the iS500 Family includes the following features:

- Transparent to S/W, H/W and Operator
- Supports all SCSI Device Types
- Ultra160 LVD and HVD Models
- FCC, UL, cUL, CE Compliant
- Plug and Go Installation

iS520 LVD/MSE and iS530 HVD Stand-Alone Bridge Versions: Simple Dependability

Ease of use distinguishes the Models iS520 LVD/MSE and iS530 HVD Stand-Alone iSCSI to SCSI Bridges. Simply connect the cables and apply power and the SCSI devices are available to the iSCSI network. Designed for computing environments, these robust iSCSI Bridges™ include the following features:

- Sturdy, Shielded Metal Enclosure
- Easy Installation and Use
- Visible Status and Diagnostic LEDs
- Universal external power supply
- FCC, UL, cUL, CE Acceptance



iS521 LVD/MSE and iS531 HVD Board Versions: Superior Integration

To easily integrate iSCSI technology and SCSI components or systems, Paralan offers high-quality Models iS521-LVD and iS531-HVD Bridges.



- Operates on 5 VDC via a Standard HDD Power Connector
- Status & Diagnostic LEDs on board
- Mounting Holes Included
- CE Compliant
- OEM Customs Available

iS550 Rack Mount Versions: Small, Convenient Enclosure

When design requirements call for rack mountable iSCSI Bridges™, Paralan has the solution. The iS550 Rack line provides flexibility and mounting convenience for any iSCSI Bridge™ within the iS500 Family. For OEM configurations, contact Paralan.

- 19 Inch 1U Rack Enclosure - Only 10 inches deep (254 mm)
- Visible Status & Diagnostic LEDs
- 100-240 VAC, 50/60 Hz Power
- FCC, UL, cUL, CE Acceptance
- Custom OEM Configurations



Technical Specifications

	iS521 LVD/MSE & iS531 HVD Board	iS520 LVD/MSE & iS530 HVD Stand Alone	iS550-L & iS550-H Rack Mount
Environmental			
Relative Humidity:	0 – 95% non-condensing	0 – 95% non-condensing	0 – 95% non-condensing
Operating Temp:	0 – 50 degrees C	0 – 50 degrees C	0 – 50 degrees C
Storage Temp:	-25 to +75 degrees C	-25 to +75 degrees C	-25 to +75 degrees C
Weight			
Unit Weight:	1 pound (0.5 kg)	3 pounds (1.3 kg)	10 pounds (4.5 kg)
Shipping Weight:	4 pounds (1.8 kg)	8 pounds (3.6 kg)	20 pounds (9.0 kg)
Physical Dimensions			
Height:	1.2 in (30.5 mm)	1.5 in (38.6 mm)	1U, 1.75 in (43.7 mm)
Width:	5.3 in (134.1 mm)	5.6 in (141.4 mm)	16.7 in (424.9 mm)
Length(depth):	8.5 in (215.9 mm)	8.9 in (224.8 mm)	10.0 in (254.0 mm)
SCSI Connection:	68 pin High Density Alt 3 "P" Connector (Shielded)	68 pin High Density Alt 3 "P" Connector (Shielded)	68 pin High Density Alt 3 "P" Connector (Shielded)
SCSI Communication Type:	iS521 Parallel Ultra160 iS531 Parallel Ultra HVD	iS520 Parallel Ultra160 iS530 Parallel Ultra HVD	iS550-L Parallel Ultra160 iS550-H Parallel Ultra HVD
Length:	Max 82 ft (25 m)	Max 82 ft (25 m)	Max 82 ft (25 m)
SCSI Termination:	iS521 LVD Multimode iS531 HVD	iS520 LVD Multimode iS530 HVD	iS550-L LVD Multimode iS550-H HVD
iSCSI Connection Type:	Cat 5e, Cat 6 copper	Cat 5e, Cat 6 copper	Cat 5e, Cat 6 copper
Length point to point:	328 ft (100 m) direct	328 ft (100 m) direct	328 ft (100 m) direct
Length Networked:	Worldwide with switches	Worldwide with switches	Worldwide with switches
IP Communication:	TCP/IP (DHCP or static IP)	TCP/IP (DHCP or static IP)	TCP/IP (DHCP or static IP)
iSCSI throughput:	Max Wire Speed*	Max Wire Speed*	Max Wire Speed*
Configuration Changes:	Via built-in web interface	Via built-in web interface	Via built-in web interface
Field Upgrades:	Via built-in web interface	Via built-in web interface	Via built-in web interface
Power Requirements			
Power Connection:	4 pin standard power	IEC 60320 C13	IEC 60320 C13
Voltage:	5 VDC +/- 5%	100-240 VAC, 50-60 Hz	100-240 VAC, 50-60 Hz
Current:	iS521 4.7 Amps DC iS531 5.5 Amps DC	1.7 Amps AC at 120 VAC	1.7 Amps AC at 120 VAC
Warranty:	2 yr limited warranty	2 yr limited warranty	2 yr limited warranty
Safety Approvals:	UL, cUL, TUV, CE Compliant	UL, cUL, TUV, CE	UL, cUL, TUV, CE
EMI/RFI:	FCC Class B, CE Compliant	FCC Class B, CE	FCC Class B, CE

(* throughput may vary depending on server and device types)

About Paralan

Founded in 1988, San Diego-based Paralan has developed a reputation for superior reliability and unparalleled quality. As pioneers in developing SCSI and iSCSI technology, Paralan is the most trusted name in SCSI Bus Enhancement.

Paralan's Other Superior Product Lines Include:

- SCSI Bus Extenders
- LVD/MSE to HVD Converters
- SCSI Switches
- SCSI Cable Testers
- SCSI Quiet Cables™
- Ultra320 Host Adapters

Corporate Office:

Paralan Corporation
4655 Ruffner St.
San Diego, CA 92111
858-560-7266
858-560-8929 fax

Web Site: www.paralan.com

Email: info@paralan.com



For complete information on Paralan's iS500 Family, or for information on Paralan's other superior product lines, please call: **866-447-6293**